



Thornhill Rise, Brighton



Guide Price
£400,000
Freehold

- FOUR BEDROOM, END OF TERRACE HOUSE
- SOUTH WEST FACING GARDEN
- VENDOR SUITED
- RARELY AVAILABLE BASEMENT WITH POTENTIAL TO EXTEND STMP
- POTENTIAL FOR OFF STREET PARKING
- EXTENDED KITCHEN / DINER

GUIDE PRICE: £400,000 - £425,000

Robert Luff & Co are delighted to bring to market this four bedroom end of terrace home located in Thornhill Rise, Portslade. Conveniently located within reach of the green open spaces of the South Downs, Thornhill Rise benefits from easy access to the A27 making this home ideally situated for young families, shoppers and commuters alike. Boundary Road provides a wide selection of high street and independent stores, bars and cafes. At the nearby Holmbush Centre, Tesco, Next and Marks & Spencer have larger superstore facilities.

Accommodation offers; spacious living area, extended kitchen/dining room, ground floor bathroom, separate WC and four bedrooms. Also benefitting from a landscaped rear garden, rarely available basement and additional storage. Local schools include Mile Oak Primary School, Portslade Aldridge Community Academy, King's School Hove, Peter and Gladwin Primary School.

**Robert
Luff & Co**
Sales | Lettings | Commercial

T: 01273 921133 E:
www.robertluff.co.uk



Accommodation

Agents Notes

EPC Rating: D

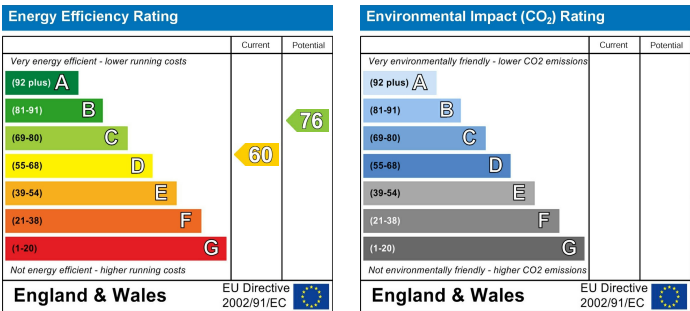
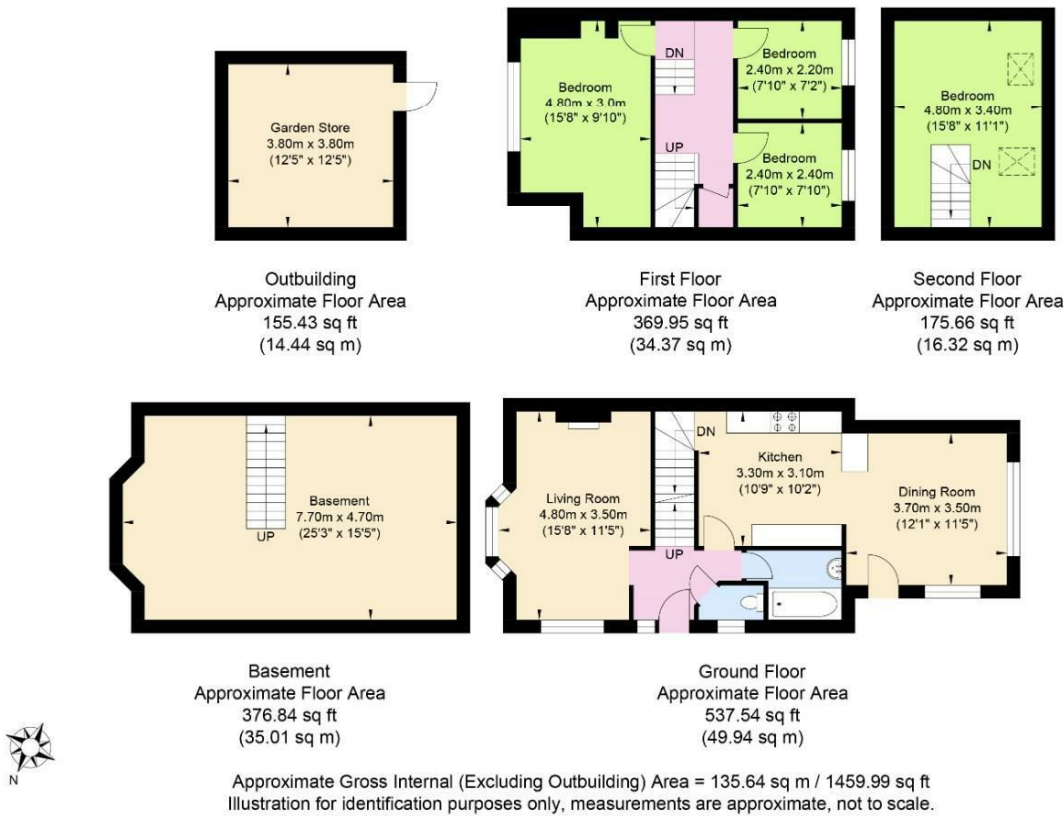
Council Tax Band: C



28 Blatchington Road, Hove, East Sussex, BN3 3YD
T: 01273 921133 E:
www.robertluff.co.uk



Thornhill Rise



The information provided about this property does not constitute or form any part of an offer or contract, nor may it be regarded as representations. All interested parties must verify accuracy and your solicitor must verify tenure/lease information, fixtures and fittings and, where the property has been extended/converted, planning/building regulation consents. All dimensions are approximate and quoted for guidance only as are floor plans which are not to scale and their accuracy cannot be confirmed. References to appliances and/or services does not imply that they are necessarily in working order or fit for the purpose.